



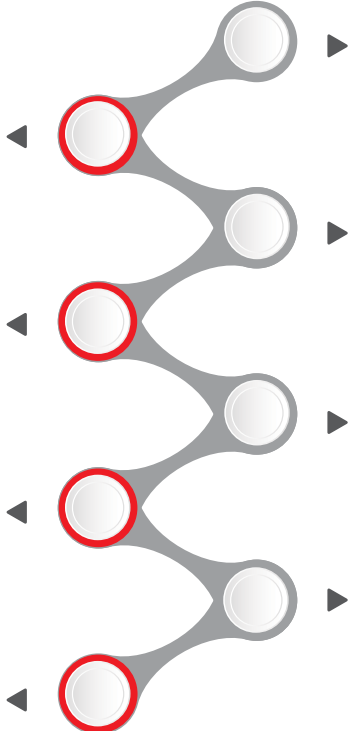
Our Specialty - Your Strength

GHC50-210

Lifting capacity
50-210t



Contents



Introduction 01	▶	Character 11 Convenient User-friendly Safe
Model List 02	▶	Application 14 Bulk handling General cargo & project cargo Container handling
Structure 04	▶	GENMA Total Solution & Service 18
Key Part & System 06 Engine Diesel-hydraulic system Undercarriage Centralized lubrication system Electric room	▶	Far More than Equipment Providing 21

Introduction

GHC series designed for different kinds of terminals: container terminal, bulk terminal and multi-purpose terminal along all type of vessels from barges to super post-panamax.

More than versatile application on different terminals and vessels, a variety of cargos can be handled with GHC.

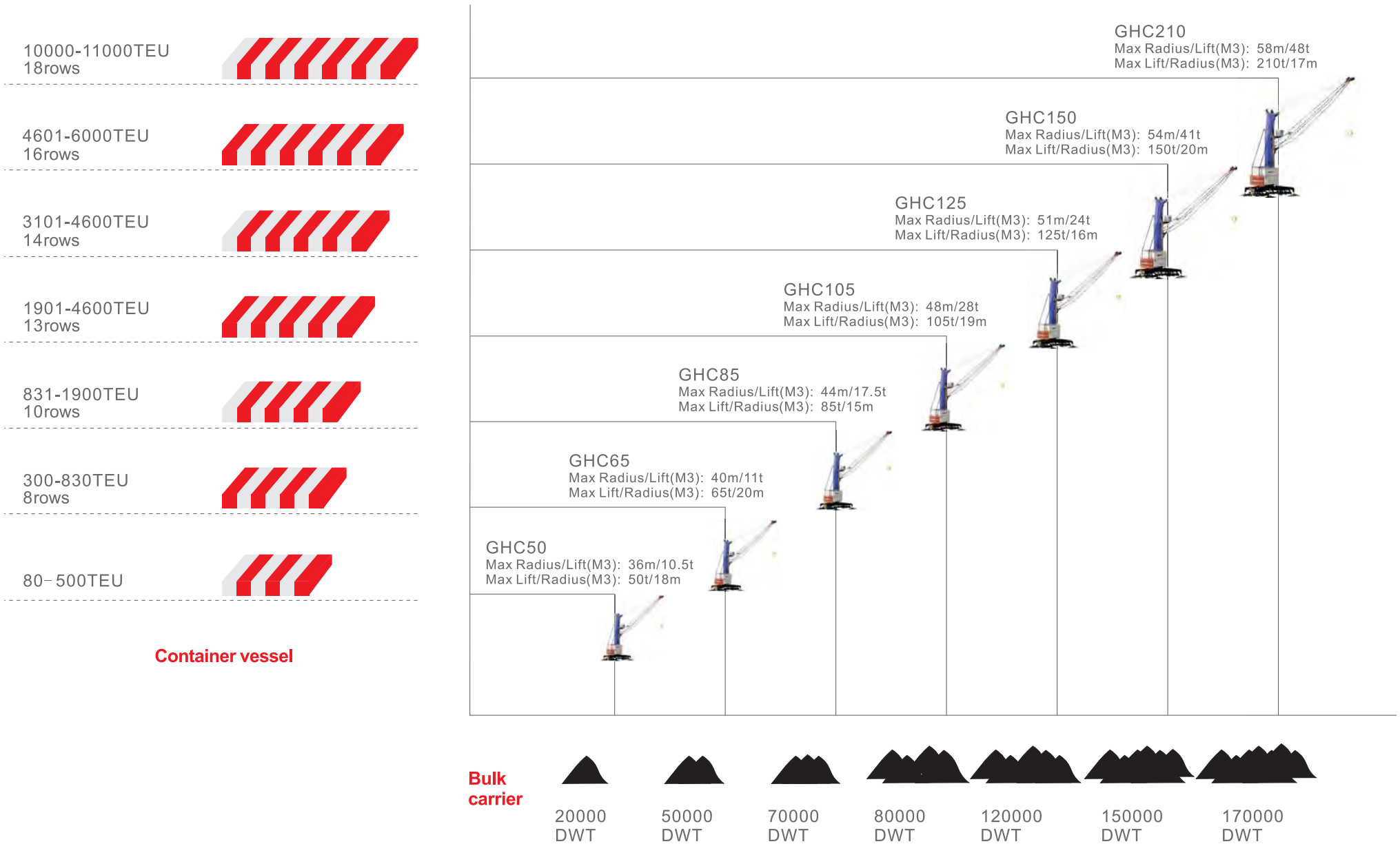
- Containers
- General cargo & project cargo
- Bulk cargo

The lifting capacity range of GHC is 50-210t while the working radius covers from 36 to 58 meters.

Besides the efficient and durable operation, you will find it is very easy to maintain and operation. And of course we never forget the ergonomic and environmentally friendly design.

Not only the reliable equipment itself, the babysitting service and total solution realization process will optimise your total cost furthest.

GHC50-210, Wide Choices for You



Optimal Designed Structure



Tower

- Polygonal structure tower with anti-twist performance.
- Direct-welding turntable flange ensures smooth load transfer, reduces the stress concentration while improves product fatigue performance meanwhile.
- The cabin platform connect with the tower via the flange.
- Blind window equipped for ventilation and light-catching.
- Increase bending moment, strong bearing capacity, meanwhile reduce machine vibration.

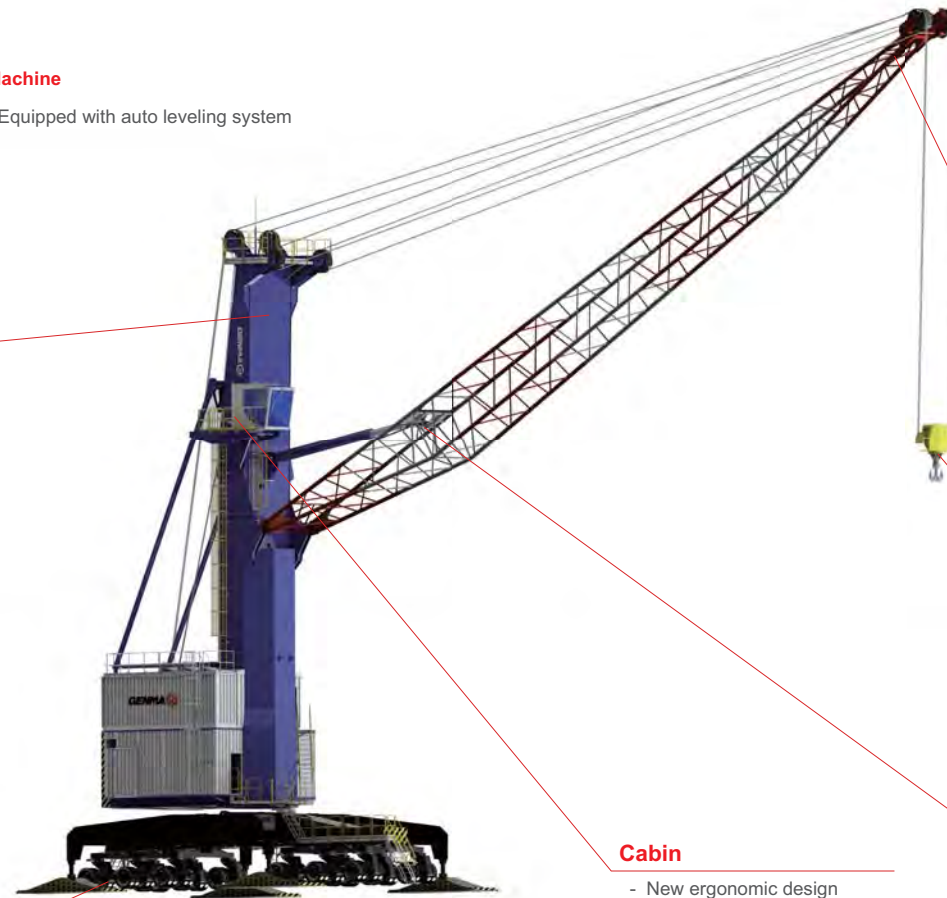


Undercarriage

- Full use of X type swing leg structure, optimized design and large carrying capacity.
- Single box beam, swing type are fabricated in high yield strength steel.
- Hydraulic power extension with separate vertical outrigger jacks.
- They may be positioned on any ground to assure maximum stability.
- Outriggers controls are located both in operator's cabins & chassis.
- All hydraulic pipes are inside the outrigger beams in order to avoid any external damage.
- A double action safety valve is mounted directly on top of each outrigger jack to prevent any loss of pressure in case of failure of the hydraulic piping.
- Elephant pads for load distribution on wide surface.
- Bubble level for horizontal checking of crane in operating condition.

Machine

- Equipped with auto leveling system



Boom

- High-strength seamless pipe welding.
- Small windward area.
- Strong resistance to twisting.
- Optimal length.

Lifting device

- Automatic centering and adjusting functions



Cabin

- New ergonomic design
- Multifunctional touch screen
- Easy detection joysticks
- Broad view and comfortable sitting



Luffing Cylinder

- Stable and safe operation
- High transmission ratio to increase performance



High Performance Engine, Fuel-efficient

Top-ranking diesel engines

Engine brand----Cummins

- Energy saving
- Engine power based on the crane variant & lifting capacity
- Hassle-free operations
- Maximum service life engine worldwide
- Bear high piston pressure



Fuel-efficient

- MDEC electronic management system

Long cycle for overhaul

- Reduce the noise & vibration while decrease maintenance cost and extend overhaul life

Engine performance

- Low oil consumption
- Low emission & maintenance cost

Environmental protection

- Latest electrical-control fuel common rail technology

Diesel-hydraulic System

Winch system: closed hydraulic system, consists of pumps and motors, shares one pump with travelling system, exchanges by electronic control selector valve.



- Single winch unit type with two-rope
- Double winch unit type with four-rope for grab operation
- Negative lamellar multi-disc brake
- Winch rope anti-winding alarm
- Anti-explosion safety protection of hydraulic pipes

Slewing system: closed hydraulic system, adds bypass control valve in the circuit for purpose of slewing buffering and braking, enhances crane slewing smoothness.

Luffing system: open hydraulic system, supplies oil by double electric control pump, equipped with electro-hydraulic directional control valve, inside of which balance valves installed. Luffing cylinder tanks enhance system efficiency and reliability.



Multiple Undercarriage Choices



Rail-type

- Appropriate to narrow port
- Allowing the truck or train to pass through

X-bracket

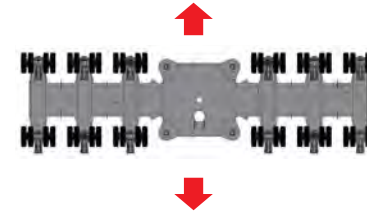
- Stable to move on the uneven ground
- The control system can realize multiple steering modes
- Less load per tyre leads to low requirement to berth load



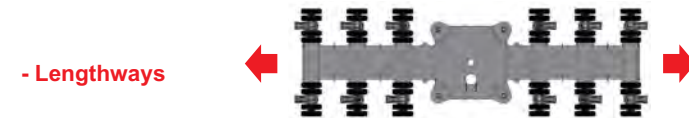
Wheeled-type

- Barrier-free mobile
- No limit to the rail and power supply
- Flexible operation applicable to various ports

Motion Direction Modes



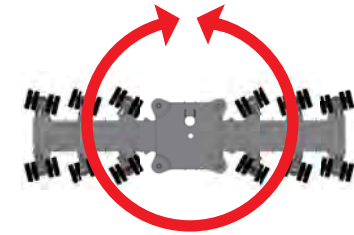
- Side direction



- Lengthways

- Full-rotation

Reduce rotation space, increase flexibility, especially for small terminals.



- Diagonally



- Curves



Centralized Lubrication System & Electric System

Centralized lubrication system

Centralized coverage of automatic centralized lubrication system. A centralized lubrication system is standard provided for a perfect lubrication of all the points where grease assistance needed during the friction. The hook block is excluded from the lubrication system.



Independent electric room

- Proximity switch, controller and real-time display monitor ensure stabilization.
- Safety protection
- Wireless remote control technology provides more convenience.

Maintenance & Operation, More Convenient

Machine room

Easy access for maintenance

Multiple control

- Cabin control
- Remote control (optional)
- Electric cabinet control

Staircase

Easy access for operation and maintenance

Boom

Humanized design for maintenance convenience



User-friendly Design

Operation room -- user-friendly design



- Designed based on broad view, comfort and easy-operation.
- Multi-function: all the motions could be realized, including travelling, slewing, luffing and hoisting/lowering.



- Wireless remote control ejector by HETRONIC
- Noiseless room and anti-glare toughened glass further guarantee the safe and effective operation
- Adjustable seat, air-conditioner and the windscreen wiper ensure the comfortable manipulation

Safety is Always the Most Important

Anti-collision design

Using a truss boom, the cylinder is located above the boom to avoid the collision of the cargo / container. The whole structure uses high-strength plate and designed in variable cross-section. The stress on the arm will be equalized and the weight will be reduced.



Automatic fire suppression

Machine room is equipped with automatic fire suppression system. (optional)



Multiple Application & Typical Cases

General cargo & project cargo

- Multi-cargos can be handled, such as timber, steel and the other cargos etc.
- Quick changing of lifting attachments increases the operation efficiency

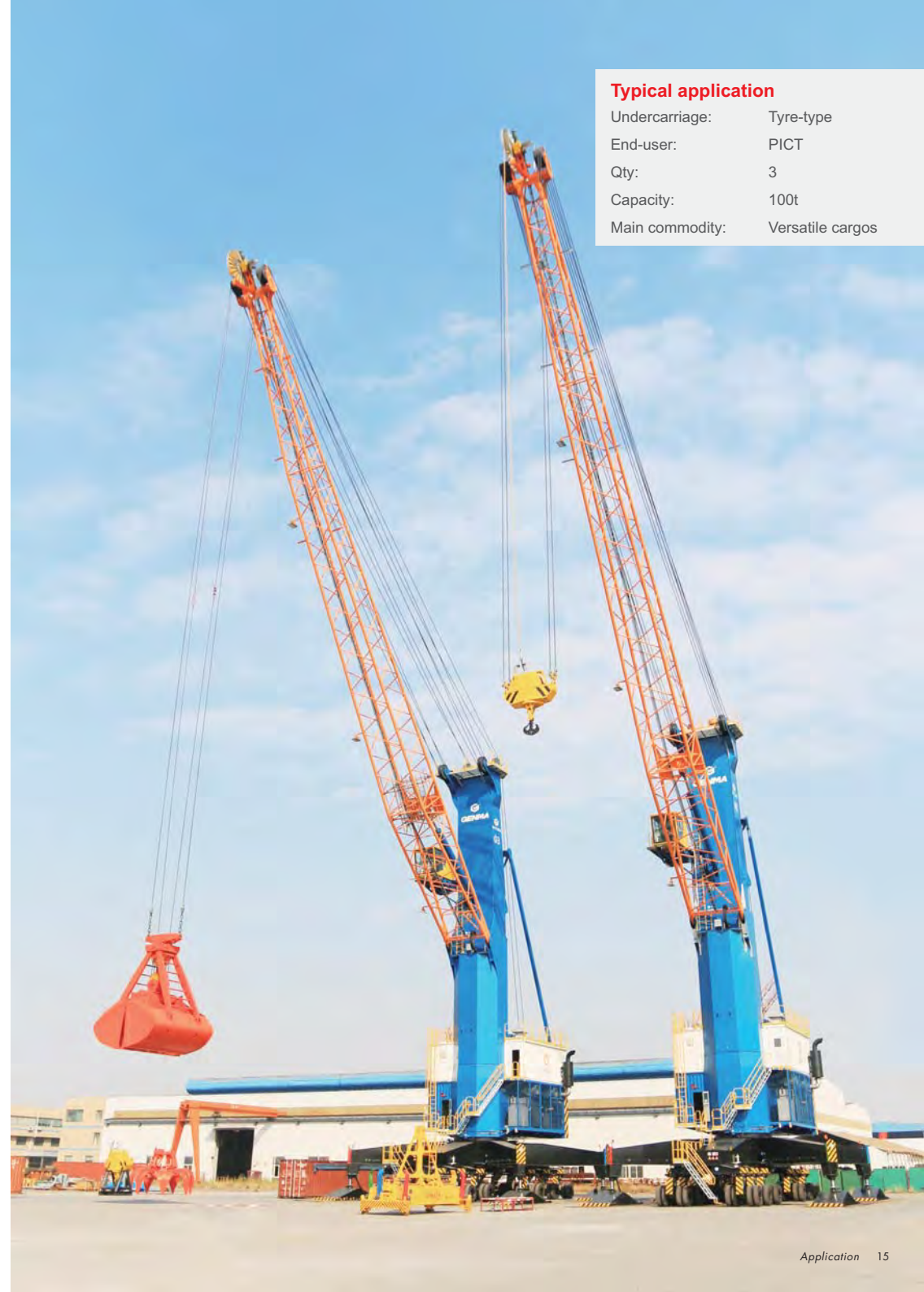
Typical application

Undercarriage: Rail-type
End-user: Ruitai port
Qty: 1
Capacity: 200t
Main commodity: Steel & project cargo



Typical application

Undercarriage: Tyre-type
End-user: PICT
Qty: 3
Capacity: 100t
Main commodity: Versatile cargos



Multiple Application & Typical Cases

Container handling

- The shackle hook can be connected with all kinds of container spreaders, including manual, semi-automatic or fully automatic telescopic container or fixed sling.
- Anti-deflection and anti-sway systems guarantee the safe and stable handling.



Typical application

Undercarriage:	Tyre-type
End-user:	MIP
Qty:	2
Capacity:	100t
Main commodity:	Container



Bulk handling

Ideal choice for multi-purpose terminal along all type of vessels.

- 2-rope motor grab & 4-rope mechanical grab optional
- Portfolio products can be offered:
 - hopper
 - belt conveyor

Typical application

Undercarriage:	Rail-type
End-user:	Runhe port
Qty:	2
Capacity:	60t
Main commodity:	Construction materials



Typical application

Undercarriage:	Tyre-type
End-user:	Jiangsu Wenqiang Ocean Engineering
Qty:	1
Capacity:	63t
Main commodity:	General cargos

GENMA Total solution

Babysitting service & total solution

We provide full service and training until the customer develops a mature operation and maintenance team. Of course, we can also provide one-stop outsourcing service with skilled operation and maintenance workers. One-time investment with great return.



Local Team, Quick Response

Localized service team

For each project, we provide customer with quick response service by our local team. Our recruited local engineering team breaks language and custom barriers, can respond on the customer requirements rapidly and timely. Our local service team is experienced at the related machines and well trained by our technical and service experts. With expertise and professional knowledge of our local service team, we assure you a prompt service and technical support. No need to worry about the communication barriers and response speed.



Optimized Project Management, Guarantee Your Delivery

Constant good quality, on-time delivery and commitment to customers are our firm disciplines and beliefs of win-win businesses and long-term relationship with our clients and partners. With extensive experience and optimized project management, we will strictly abide by contract and guarantee your 100% on-time delivery as we promised. Customers' benefits are our first priority.



Far More than Equipment Providing...



GENMA Worldwide



GENMA Bulk Division

Rainbow Heavy Industries Co.,Ltd.

Tel: +86 -21 -6333 3037

Add: Room 1505, No.1 Zhongji Building, Lane 819,
Yinxiang Road, Shanghai, China

E-mail: genmabulk@rainbowco.com.cn

Web: www.genmabulk.com

www.genmasolution.com (valid from Mar. 2018)



Our Specialty - Your Strength